

Major Scales

Flute

This musical score provides the notation for major scales on the flute. It consists of 14 staves, each representing a different scale. The scales are: C Concert, F Concert, G Concert, Bb Concert, D Concert, Eb Concert, A Concert, Ab Concert, E Concert, Db Concert, B Concert, F#/Gb Concert, and Chromatic. Each scale is written in a single line of music, starting with a treble clef and a key signature. The notes are written in a sequence that typically ascends and then descends. The chromatic scale is the only one that includes both sharps and flats.

C Concert

F Concert

G Concert

Bb Concert

D Concert

Eb Concert

A Concert

Ab Concert

E Concert

Db Concert

B Concert

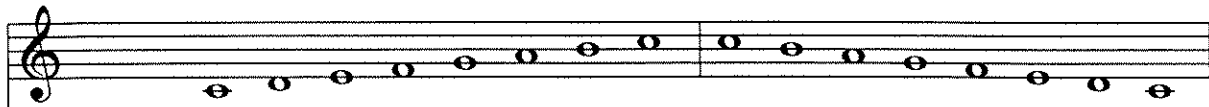
F#/Gb Concert

Chromatic

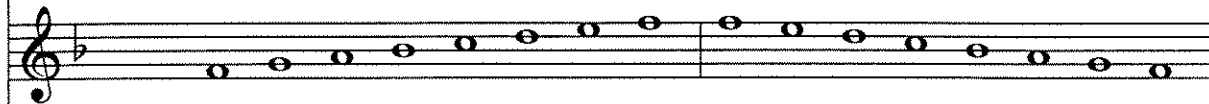
Major Scales

Oboe

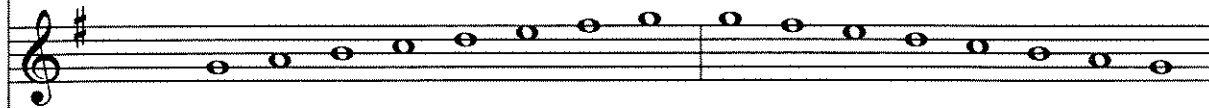
C Concert



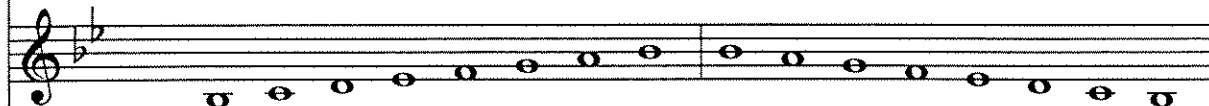
F Concert



G Concert



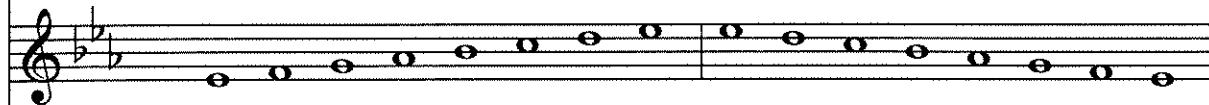
Bb Concert



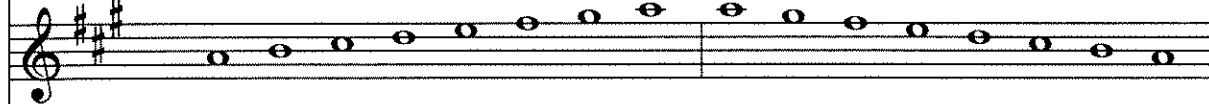
D Concert



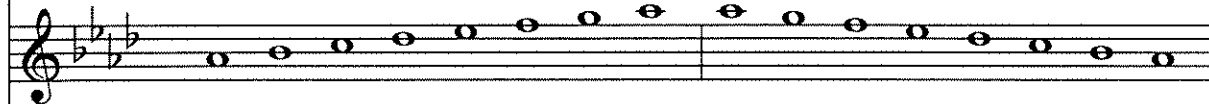
Eb Concert



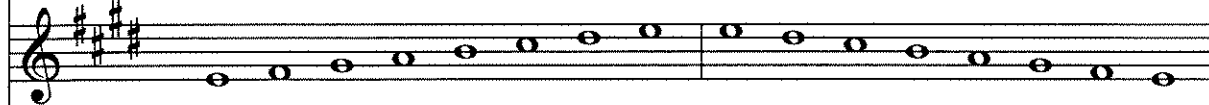
A Concert



Ab Concert



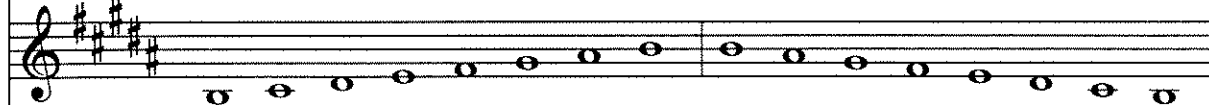
E Concert



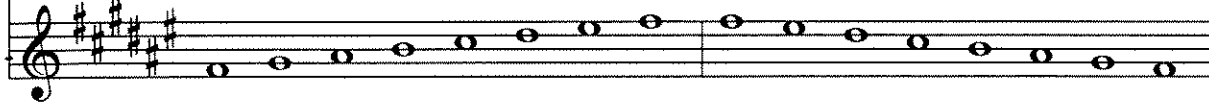
Db Concert



B Concert



F#/Gb Concert



Chromatic



Major Scales

Clarinet

This musical score provides the major scales for the Clarinet. It consists of 14 staves, each representing a different scale. Each scale is written in a single system with a treble clef and a key signature. The scales are: C Concert, F Concert, G Concert, Bb Concert, D Concert, Eb Concert, A Concert, Ab Concert, E Concert, Db Concert, B Concert, F#/Gb Concert, and Chromatic. Each scale is presented in two measures, with the first measure showing the ascending sequence and the second measure showing the descending sequence. The notes are written as half notes, and the key signatures are indicated by sharps or flats at the beginning of each staff.

C Concert

F Concert

G Concert

Bb Concert

D Concert

Eb Concert

A Concert

Ab Concert

E Concert

Db Concert

B Concert

F#/Gb Concert

Chromatic

Major Scales

Bass Clarinet

This musical score provides the notation for 14 major scales for the Bass Clarinet. Each scale is presented on a single staff with a treble clef and a key signature. The scales are arranged in the following order from top to bottom:

- C Concert
- F Concert
- G Concert
- Bb Concert
- D Concert
- Eb Concert
- A Concert
- Ab Concert
- E Concert
- Db Concert
- B Concert
- F#/Gb Concert
- Chromatic

The notation for each scale consists of two measures. The first measure shows the ascending scale, and the second measure shows the descending scale. The notes are written as quarter notes. The chromatic scale is written as a single continuous line of notes, alternating between natural and sharp forms of each note in the octave.

Major Scales

Alto Saxophone

This sheet music provides the notation for major scales on the alto saxophone. Each scale is presented on a single staff with a treble clef and a key signature. The scales are arranged in the following order from top to bottom:

- C Concert
- F Concert
- G Concert
- Bb Concert
- D Concert
- Eb Concert
- A Concert
- Ab Concert
- E Concert
- Db Concert
- B Concert
- F#/Gb Concert
- Chromatic

The scales are written in a two-measure format, with the first measure showing the ascending scale and the second measure showing the descending scale. The notes are marked with stems and flags to indicate slurs. The chromatic scale is written as a single continuous line of notes.

Major Scales

Tenor Sax

C Concert



F Concert



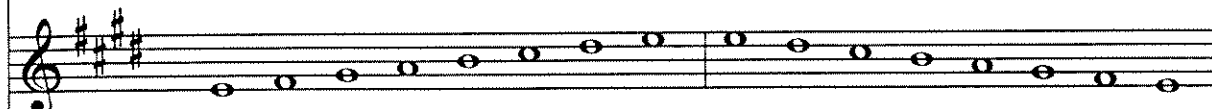
G Concert



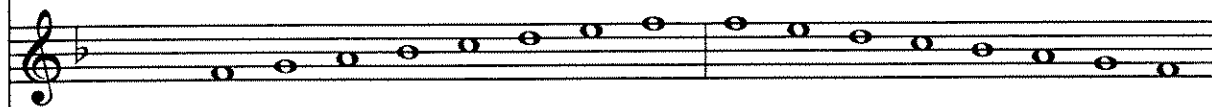
Bb Concert



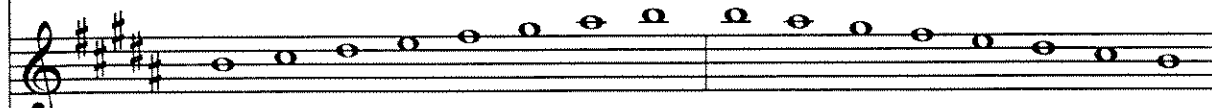
D Concert



Eb Concert



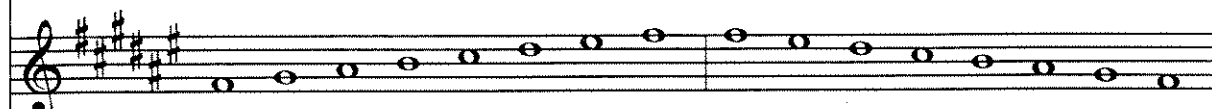
A Concert



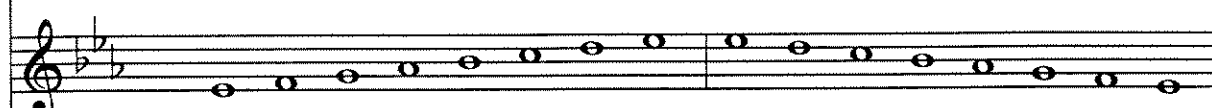
Ab Concert



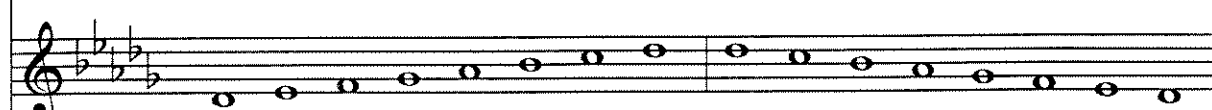
E Concert



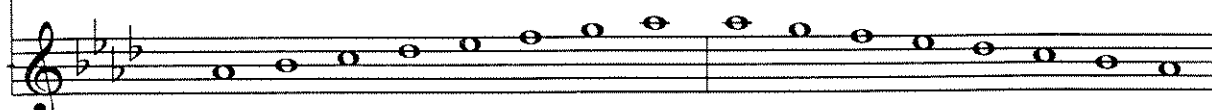
Db Concert



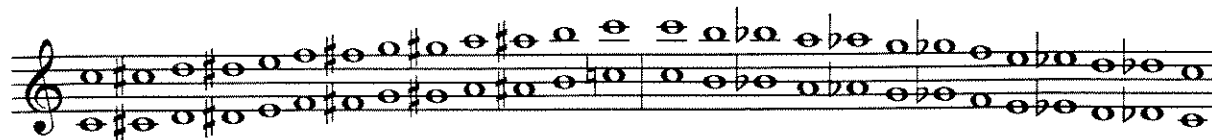
B Concert



F#/Gb Concert



Chromatic



Major Scales

Baritone Saxophone

This musical score provides the major scales for the Baritone Saxophone. It consists of 14 staves, each representing a different key signature. The scales are written in treble clef and are organized into two groups: concert keys and chromatic. Each scale is presented in two measures, with the first measure showing the ascending scale and the second measure showing the descending scale. The notes are marked with stems and flags to indicate fingerings. The key signatures are: C Concert (no sharps or flats), F Concert (one flat), G Concert (two sharps), Bb Concert (two flats), D Concert (two sharps), Eb Concert (three flats), A Concert (three sharps), Ab Concert (four flats), E Concert (four flats), Db Concert (five flats), B Concert (five flats), and F#/Gb Concert (six flats). The final staff is labeled 'Chromatic' and shows the natural major scale with no sharps or flats.

C Concert

F Concert

G Concert

Bb Concert

D Concert

Eb Concert

A Concert

Ab Concert

E Concert

Db Concert

B Concert

F#/Gb Concert

Chromatic

Major Scales

Trumpet

This sheet music provides the major scales for the trumpet. Each scale is presented on a single staff in treble clef, with two measures per scale. The scales are: C Concert, F Concert, G Concert, Bb Concert, D Concert, Eb Concert, A Concert, Ab Concert, E Concert, Db Concert, B Concert, F#/Gb Concert, and Chromatic. The key signatures are indicated by sharps or flats at the beginning of each staff. The chromatic scale is the only one that includes both ascending and descending lines.

C Concert

F Concert

G Concert

Bb Concert

D Concert

Eb Concert

A Concert

Ab Concert

E Concert

Db Concert

B Concert

F#/Gb Concert

Chromatic

Major Scales

Horn

This musical score provides the major scales for the Horn instrument. It consists of 14 staves, each representing a different scale. The scales are written in treble clef and are organized into two groups: major scales and a chromatic scale. Each scale is presented in two measures, showing the ascending and descending directions. The scales are: C Concert, F Concert, G Concert, Bb Concert, D Concert, Eb Concert, A Concert, Ab Concert, E Concert, Db Concert, B Concert, F#/Gb Concert, and Chromatic. The chromatic scale is the only one that includes both sharp and flat accidentals to show the full range of the instrument.

C Concert

F Concert

G Concert

Bb Concert

D Concert

Eb Concert

A Concert

Ab Concert

E Concert

Db Concert

B Concert

F#/Gb Concert

Chromatic

Major Scales

Trombone/Baritone

This musical score provides the major scales for Trombone and Baritone. It consists of 13 staves, each representing a different scale. Each staff begins with a bass clef and a key signature symbol. The scales are written in a two-measure format, with the first measure showing the ascending scale and the second measure showing the descending scale. The scales are: C Concert, F Concert, G Concert, Bb Concert, D Concert, Eb Concert, A Concert, Ab Concert, E Concert, Db Concert, B Concert, F#/Gb Concert, and Chromatic. The Chromatic scale is the only one that includes both ascending and descending lines.

C Concert

F Concert

G Concert

Bb Concert

D Concert

Eb Concert

A Concert

Ab Concert

E Concert

Db Concert

B Concert

F#/Gb Concert

Chromatic

Major Scales

Tuba

This musical score provides the major scales for the tuba instrument. It consists of 13 staves, each representing a different scale. The scales are: C Concert, F Concert, G Concert, Bb Concert, D Concert, Eb Concert, A Concert, Ab Concert, E Concert, Db Concert, B Concert, F#/Gb Concert, and Chromatic. Each scale is written in bass clef and includes a key signature and a two-measure sequence of notes. The notes are represented by circles with stems, and accidentals (sharps and flats) are placed before the notes. The Chromatic scale is the only one that includes both ascending and descending sequences.

C Concert

F Concert

G Concert

Bb Concert

D Concert

Eb Concert

A Concert

Ab Concert

E Concert

Db Concert

B Concert

F#/Gb Concert

Chromatic

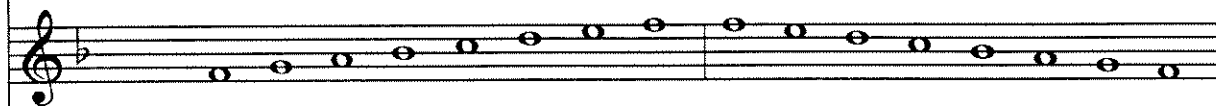
Major Scales

Mallets

C Concert



F Concert



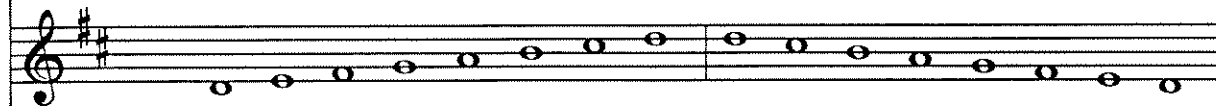
G Concert



Bb Concert



D Concert



Eb Concert



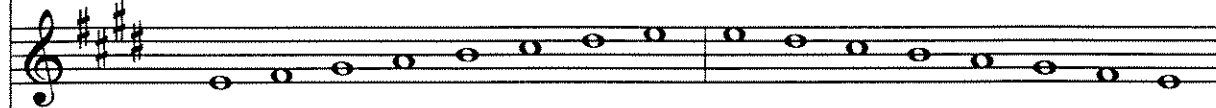
A Concert



Ab Concert



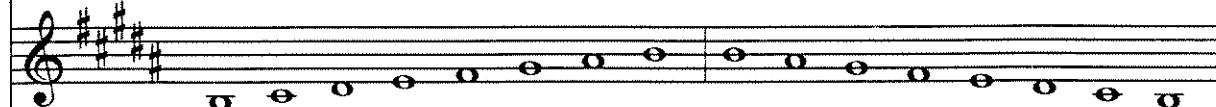
E Concert



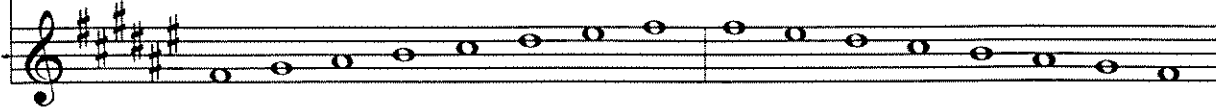
Db Concert



B Concert



F#/Gb Concert



Chromatic

